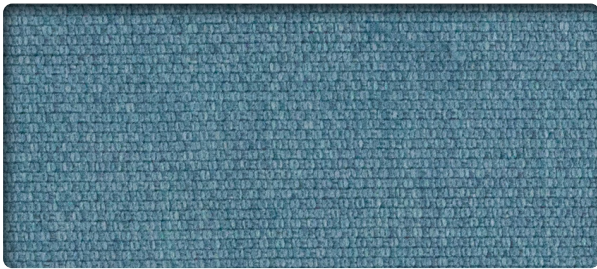
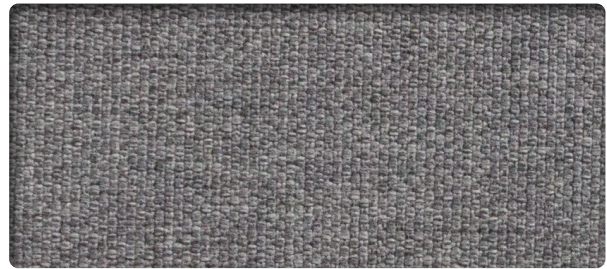


Lagoon (SPLO)



Blue (SPBL)



Grey (SPGR)



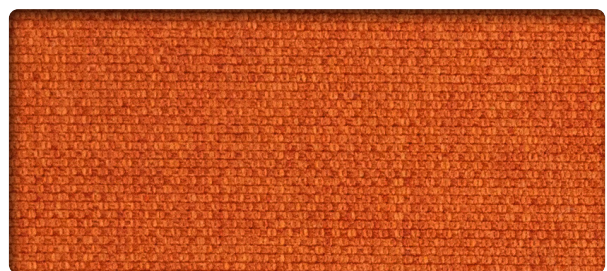
Yellow (SPYL)



Red (SPRD)



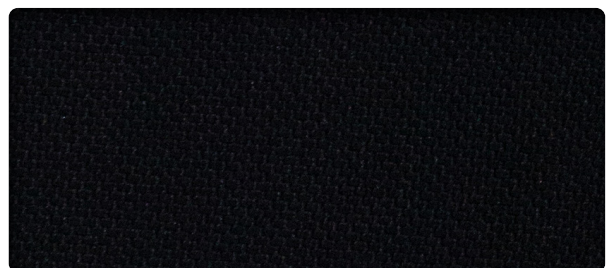
Charcoal (SPCH)



Orange (SPOR)



Green (SPGN)



Black (SPBK)

Splice

Technical Specifications

Composition:	100% Polyester
Weight:	368g/m ²
Roll Width:	162cm
Abrasion Rating:	> 40,000 rubs (Martindale)
Flammability:	BS EN 1021 - 1: 1994 (Cigarette) BS EN 1021 - 2: 1994 (Match) BS 7176: 1995 Low Hazard BS 476 Part 7 Class 1
Colour Matching:	Batch to batch variations in colour may occur within commercial tolerances.

Maintenance & Cleaning

We recommend professional dry cleaning for Splice fabric.

- Protect from direct sunlight.
- Vacuum regularly using low suction.
- Wipe clean with a damp cloth using upholstery shampoo.
- Don't scrub or use stiff brush.
- Don't use dishwashing or laundry detergents.
- Dry in the shade, away from direct heat.
- Allow to dry thoroughly before reusing.

Environmental

As a caring, corporate citizen, we support the responsible stewardship of the earth, its inhabitants and its resources.

Our fabrics are designed and made to last, and in their manufacture, use and disposal, embody the environmental principles of Reduce, Reuse & Recycle.